

# EAVE FILLER STRIP

## *Biycell*

### DESCRIPTION:

Biycell Eave Filler Strips are manufactured from high-quality, closed-cell, flexible cross-linked polyethylene foam, precisely cut to fit various roof and wall sheet profiles. This durable material offers excellent shock absorption and heat resistance, ensuring long-lasting performance.

Standard Biycell Eave Filler Strips are supplied in dark grey, with white available upon request. They are available in both top and bottom profiles where applicable. While standard profiles are listed, a wider range of custom profiles can be provided upon request.

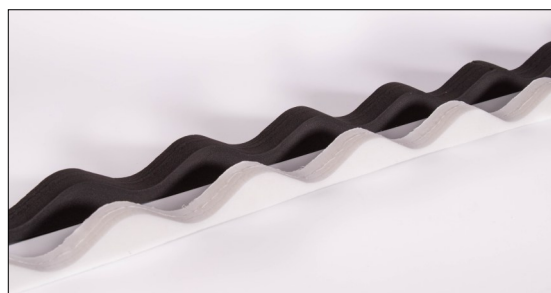
### USES:

The eave filler strip is installed in the gap between the roof and eave to provide an effective seal against weather, dust, and vermin infiltration.

### TECHNICAL DATA:

### PROFILE RANGE:

PROFILE	LENGTH
Custom Orb	918mm
Greca	930mm
Hi-Rib	760mm
Kliplok 700	920mm
Prodek	850mm
Spandek	800mm
Super 6	1150mm
Trimdek	950mm



DESCRIPTION	UNIT	VALUE	METHOD
Density	Kg/m <sup>3</sup>	27 ± 3	ASTM D3575
Tensile Strength	kPa	200	ASTM D412
Elongation Ratio	%	170	ASTM D412
Compression Strength 25%	kPa	30	ASTM D1056
Compression Set 25%	%	32.0	ASTM D1056
Hardness	Shore C	17±3	ASTMD2240
	Shore OO	30~50	
Tear Strength	kN/m	1.5	ASTM D624

Updated Feb 2025

Tampala Pty Ltd trading as BIY Construction Supplies  
 23-27 Clyde Street, Wingfield SA 5013  
 ABN 47 008 016 082

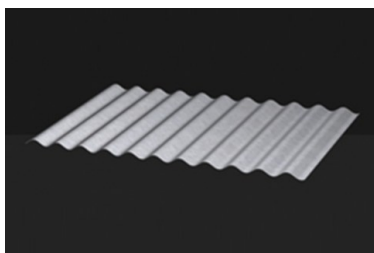
Phone 08 8347 0444  
[www.biy.com.au](http://www.biy.com.au)  
[sales@biy.com.au](mailto:sales@biy.com.au)

# EAVE FILLER STRIP

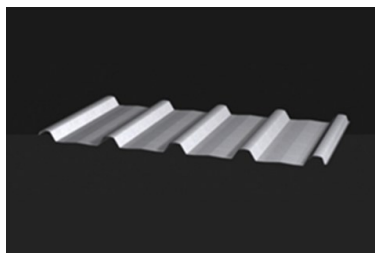
*Biycell*

## CHEMICAL RESISTANCE:

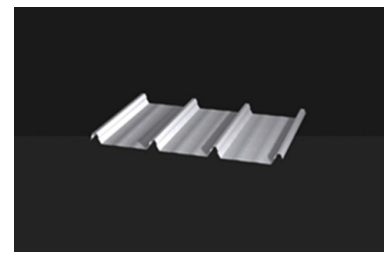
MEDIUM	VISIBLE CHANGE	LENGTH	WIDTH	THICKNESS	ABSORPTION VOLUME %	RETENTION OF TENSILE STRENGTH %
Distilled Water	None	+0.2	-2.2	-3.7	1.7	-
Sulphuric Acid 30%	None	+0.2	+0.3	-0.5	0.4	96
Sulphuric Acid 3%	None	-0.4	0	-1.7	0.4	-
Nitric Acid 10%	None	-0.2	+2.5	-0.1	1.0	100
Hydrochloric Acid 10%	None	+0.6	+0.5	-1.7	0.8	100
Acetic Acid 5%	None	+0.6	+1.0	-3.9	1.6	98
Oleic Acid	None	+1.2	+2.3	-4.4	4.3	-
Caustic Soda Solution 10%	None	+0.2	+0.8	-0.9	0.9	100
Caustic Soda Solution 1%	None	-0.2	+0.8	-1.5	0.4	-
Ammonia 10%	None	+1.2	-2.0	-1.5	1.8	-
Soda-Water 2%	None	+0.4	+1.0	-1.5	1.8	-
Sodium Cl Solution 10%	None	-0.6	-1.5	-1.1	0.8	99
Aqueous phenol Solution 5%	None	+0.4	+2.0	-2.3	1.9	97
Citric Acid Solution 5%	None	+0.4	+1.0	+2.0	1.3	
Hydroperoxide 3%	None	0	+1.3	+3.8	0.9	100
Ethanol 95%	None	0	0	-0.7	3.7	99
Ethanol 50%		0	-0.5	-3.2	2.2	-
Acetone	None	+0.4	+1.2	-3.0	5.5	100
Ethyl Acetate	None	+1.0	+1.7	+0.8	6.1	100
Ethylene Chloride	None	+2.0	+2.8	-8.0	3.4	100
Carbon Tetrachloride	None	+8.2	+7.7	+1.3	16.7	100
Toluene	None	+6.4	+7.3	+1.8	14.7	100
Heptane	None	+6.8	+7.3	-5.7	11.3	100



Custom Orb



Trimdek



Kliplok 700

Updated Feb 2025

Tampala Pty Ltd trading as BIY Construction Supplies  
23-27 Clyde Street, Wingfield SA 5013  
ABN 47 008 016 082

Phone 08 8347 0444  
www.biy.com.au  
sales@biy.com.au